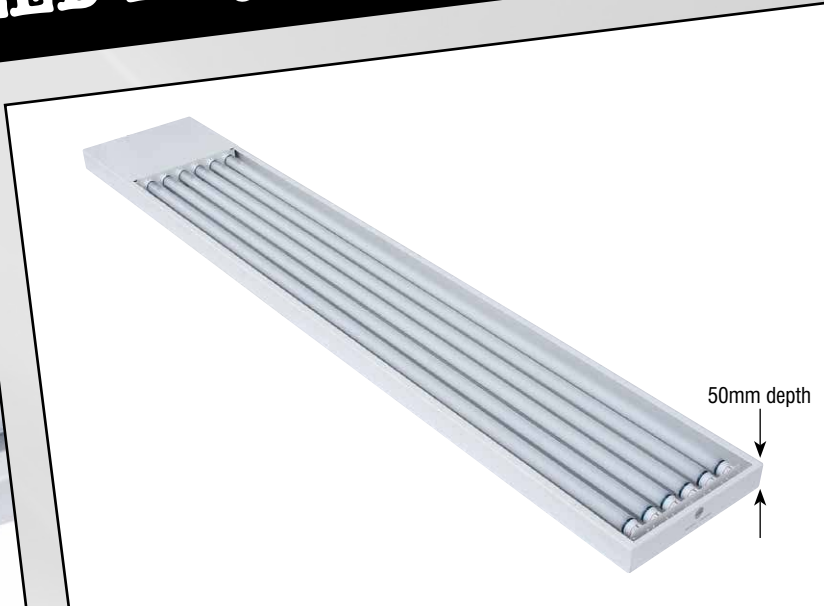


# High Power LED Tray-Bay Fitting



A low profile LED bay light for a wide variety of industrial and commercial applications including sports, retail and warehouse installations.

- Luminaries efficiency of 100 – 110 lm/w
- Modular design multiple independent light sources
- Surface or suspension mounting points
- Low profile design to minimise collisions with fork lift trucks
- Wire guard or polycarbonate cover options available.
- Occupancy sensor options available
- 3 or 5 year warranty options
- Emergency kits option available



PRODUCT CODE	TUBE QUANTITY	POWER (W)	TOTAL LUMENS
LED/TB/5FTX4/CDL	4	96W	10400
LED/TB/5FTX6/CDL	6	144W	15600
LED/TB/5FTX8/CDL	8	192W	20800

For more information call the lamps team on **01780 758590**